

## Features

- ◇ Standard RS485 interface for communicating with external repeater panel.

## Description

- 1) P-9945RP is an optional card for GST-IFP8 control panel, providing RS485 for system integration of the third party.
- 2) This card shouldn't be inserted and removed when it is energized. Com board can be set address through DIP switch.

Except main board, count the boards on the motherboard from the bottom beginning with address1. Set the address to DIP switch base on the number of the boards.

- 3) The screen will show that the device is registering so please wait as Reset key is pressed. After successful registration, User Setup screen can be accessed by pressing User Setup key. After that, the system enters 1 ) Browse=>1)BROWSE DEVICES. Registration is successful if CRT Card-01 is displayed.
- 4) Indicators
  - a) Main board Com HL1 LED: Red. It flashes or illuminates when P-9945RP is working normally.
  - b) External Com HL2 LED: Green. It flashes or illuminates when RS485 communicates normally.

## Connection & Wiring

Fig. 1 shows that main board connects with P-9945RP.

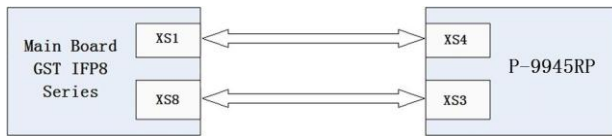
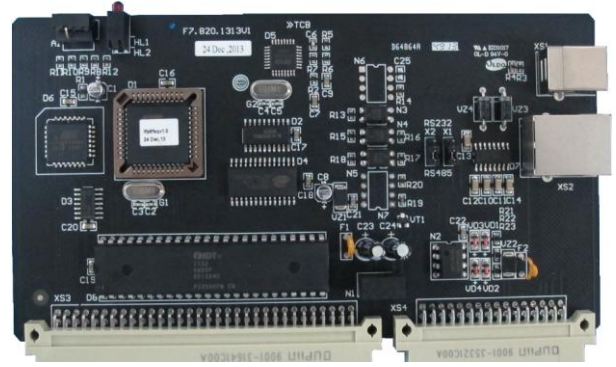


Fig. 1



## Installation

Mounting methods can be different for different types of control panels.

Fig 2 shows back of GST-IFP8 control panel.

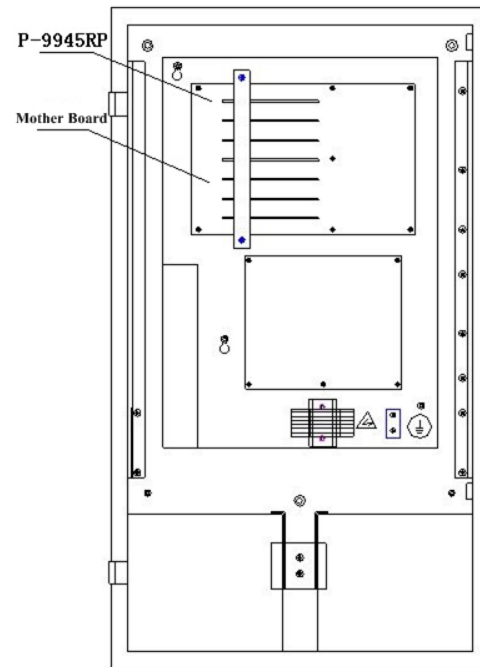


Fig. 2

Fig. 3 shows GST-IFP8 mother board.

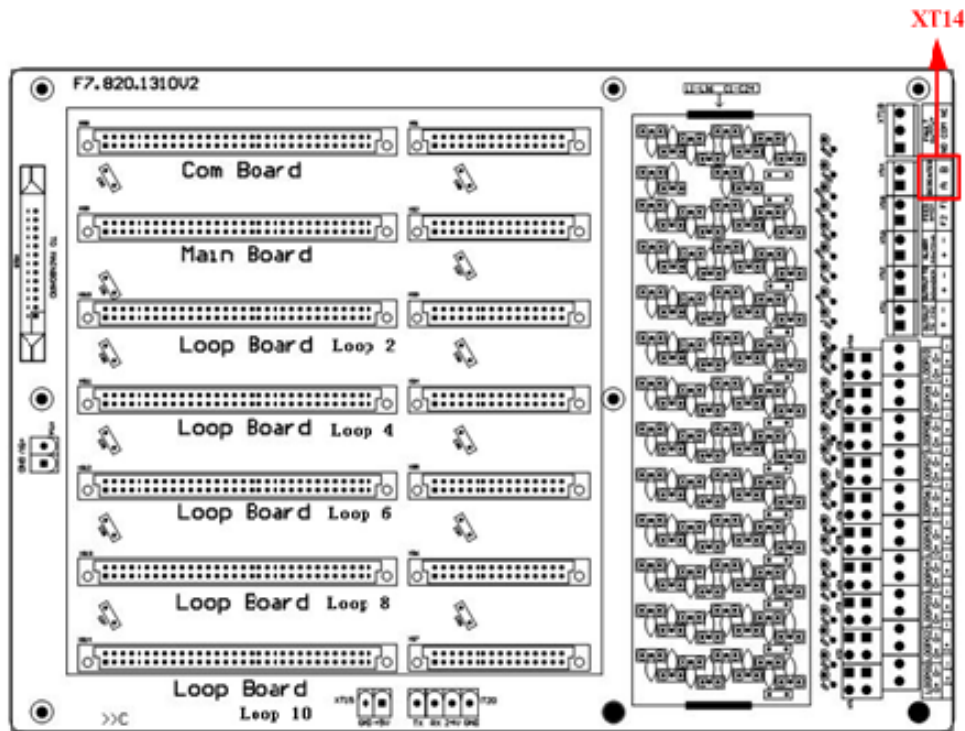


Fig. 3

## Application

XS3 and XS4 of P-9945RP Repeater Card can be connected with and XS8, XS1 of GST IFP8. XS4 (XS1 of a motherboard) can be connected with Repeater 485. XT14 of the motherboard can be connected with repeater panel (including GST852RP, GST8903, GST852RPX)

## Specification

Comm. Interface	RS485
Comm. Distance	< 1200m
Baud Rate	4800bps
Ambient Temperature	0°C ~ +40°C
Relative Humidity	≤95%, non condensing

## WEEE Information

2012/19/EU (WEEE directive): Products marked with this symbol cannot be disposed of as unsorted municipal waste in the European Union. For proper recycling, return this product to your local supplier upon the purchase of equivalent new equipment, or dispose of it at designated collection points.



## Limited Warranty

**GST** warrants that the product will be free from defects in design, materials and workmanship during the warranty period. This warranty shall not apply to any product that is found to have been improperly installed or used in any way not in accordance with the instructions supplied with the product. Anybody, including the agents, distributors or employees, is not in the position to amend the contents of this warranty. Please contact your local distributor for products not covered by this warranty.

This Data Sheet is subject to change without notice. Please contact GST for more information or questions.

**Gulf Security Technology Co., Ltd.**

No. 80, Changjiang East Road, QETDZ, Qinhuangdao, Hebei, P. R. China 066004

Tel: +86 (0) 335 8502434 Fax: +86 (0) 335 8502532

[service.gst@fs.utc.com](mailto:service.gst@fs.utc.com) [www.gst.com.cn](http://www.gst.com.cn)